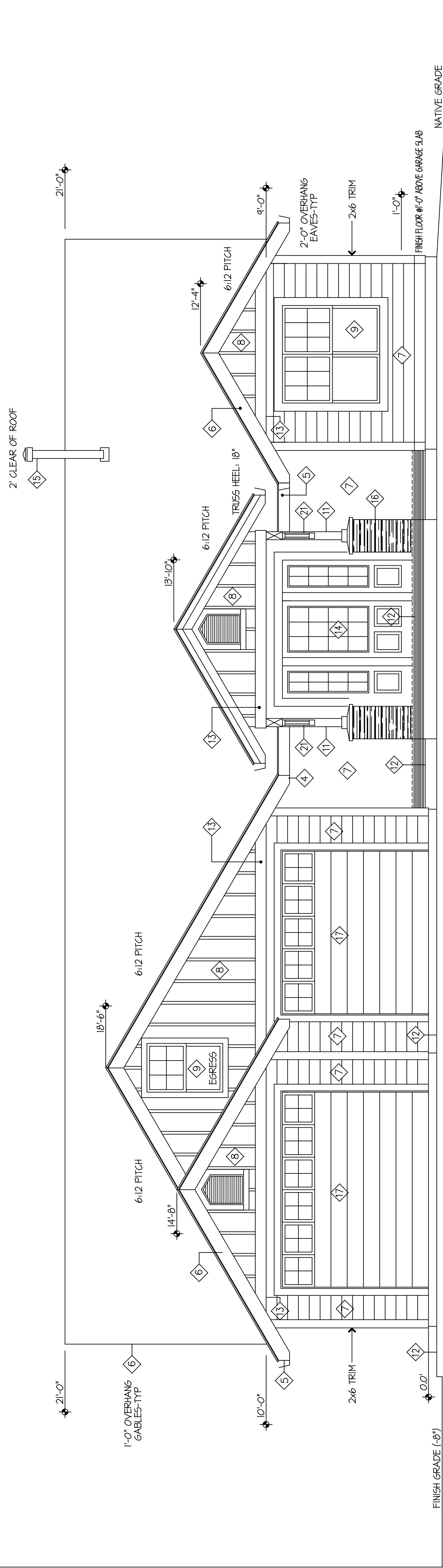


NOTE: ROOF ELEVATION HEIGHTS ARE TAKEN FROM FINISH FLOOR.

EXTERIOR ELEVATION: WEST

SCALE: 1/4" = 1'-0"



NOTE: ROOF ELEVATION HEIGHTS ARE TAKEN FROM FINISH FLOOR.
AT CONCRETE PATIOS PORCHES STOOPS PROVIDE 6" SLOPE FOR A MIN OF 10' AWAY FROM FOUNDATION
PLATE HEIGHT: 9'-0" @HOUSE 10'-0" @GARAGE/ 2x6 EXTERIOR WALLS / 6:12 ROOF PITCH / 2'-0" OVERHANG-EAVES AND 1'-0" OVERHANG-GABLES

EXTERIOR ELEVATION: NORTH

SCALE: 1/4" = 1'-0"

- 1 CLASS-A 40 YEAR COMP ROOF "OWNER SELECT"
- 2 CONTINUOUS RIDGE VENT
- 3 G5M GABLE END VENTS
- 4 CONTINUOUS SOFFIT VENTS W "LP SMART" SOFFIT
- 5 2x8 FASCIA BOARD & G5M FASCIA GUTTER-LEAF GUARDS AND DOWNSPOUTS W/FLASHGUARD-PAINTED
- 6 2x10 BARGE RAFTER-PAINTED
- 7 "SMART" 8" HORIZONTAL SIDING OVER 3/8" MIN PLYWD SHEAR.
- 8 BOARD AND BATTEN SIDING: 3/8" PLYWD W 2" BATTENS @16" OC AT GABLE ENDS
- 9 LOW-E VINYL or FIBERGLASS WINDOWS I-PANE TEMP (UNO)
- 10 FIBERGLASS FRENCH DOORS TEMP2
- 10A 12x8' SLIDING GLASS DOOR TEMP2
- 11 6x6 POST WITH 6x12 HEADERS & 2x TRIM TOP AND BOTTOM
- 12 CONCRETE PORCH AND DRIVEWAY
- 13 2x8 BELLY BAND W/D RIP AND FLASHING
- 13 2x12 AS NOTED
- 14 3/4-LITE TEMP SOLID CORE ENTRY DOOR SYSTEM-FIBERGLASS WITH TEMPERED SIDELITES
- 15 DOUBLE WALL STOVE PIPE W/SPARK ARRESTOR 2' CLEAR OF ROOF
- 16 48" HIGH STONE VENEER COLUMNS W/STONE DRIP CAP
- 17 FIBERGLASS-TEMPERED LITES OVERHEAD DOOR W OPENER
- 18 COMPOSITE DECK AND RAILING +42" HIGH
- 18 RAILING IS COMPOSITE OR METAL-BOLT DOWN STEPPED CONCRETE FOOTING AND STEMWALL
- 19 CRAWLSPACE ACCESS-LINE UP WITH OPENING ABOVE
- 20 3068 OPENING NOTE: 6'-0" OPENING MAX DECORATIVE KORBEL
- 21

ELEVATION KEY NOTES